

X

1

+ 21 %

ORANGE

X

2

+ 15 %

+ 14 %

3

X

+ 15 %

5

X

+ 16 %

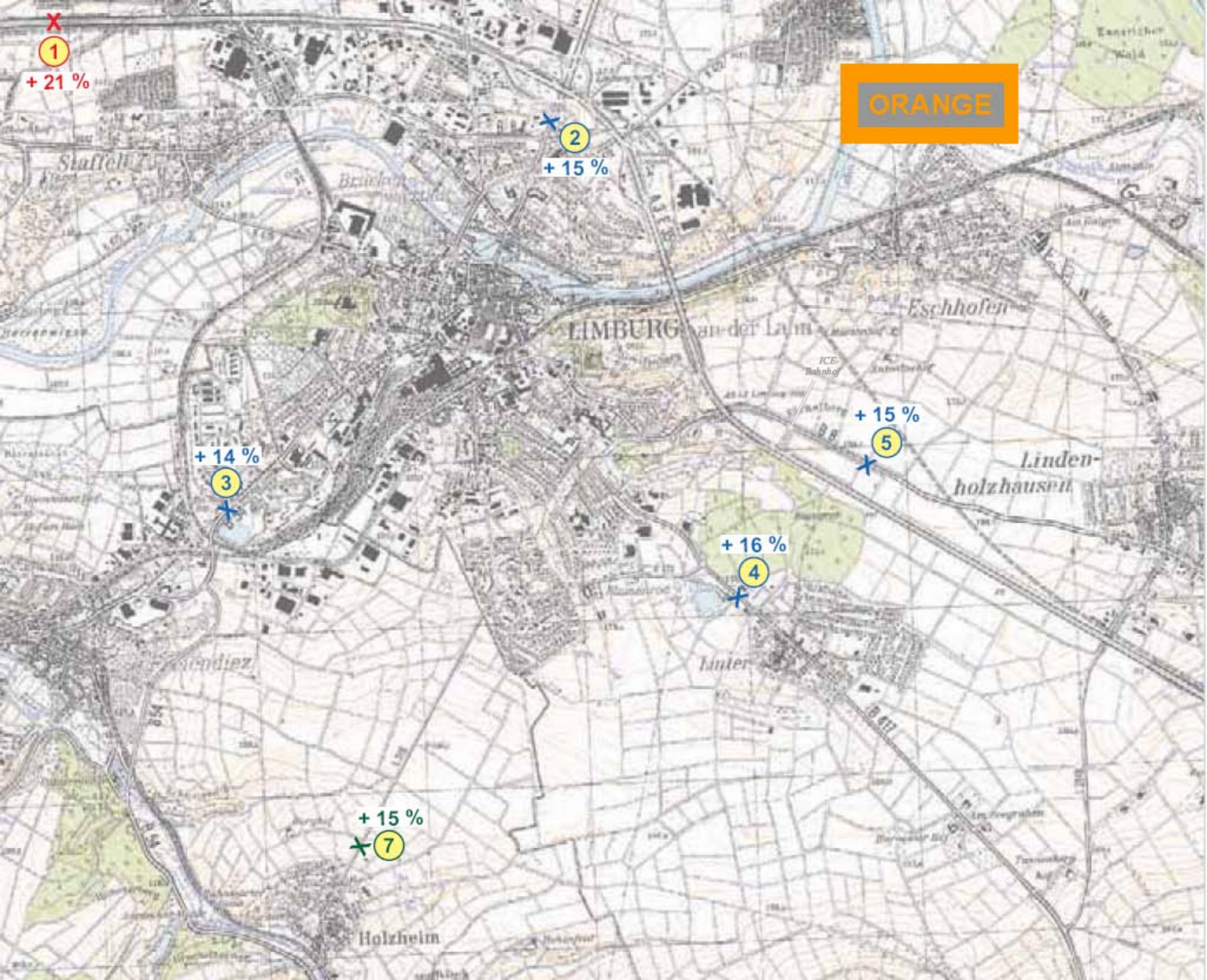
4

X

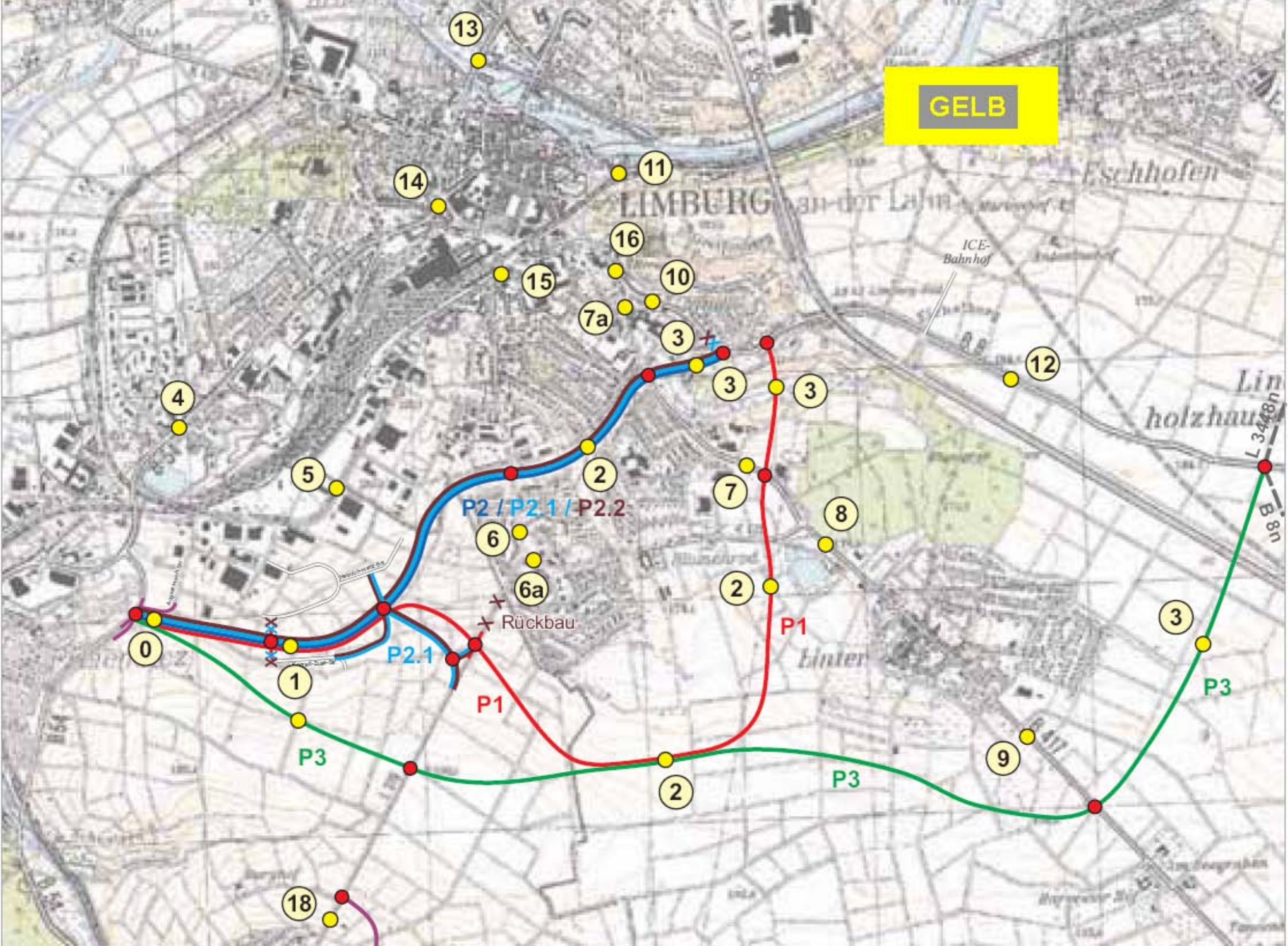
+ 15 %

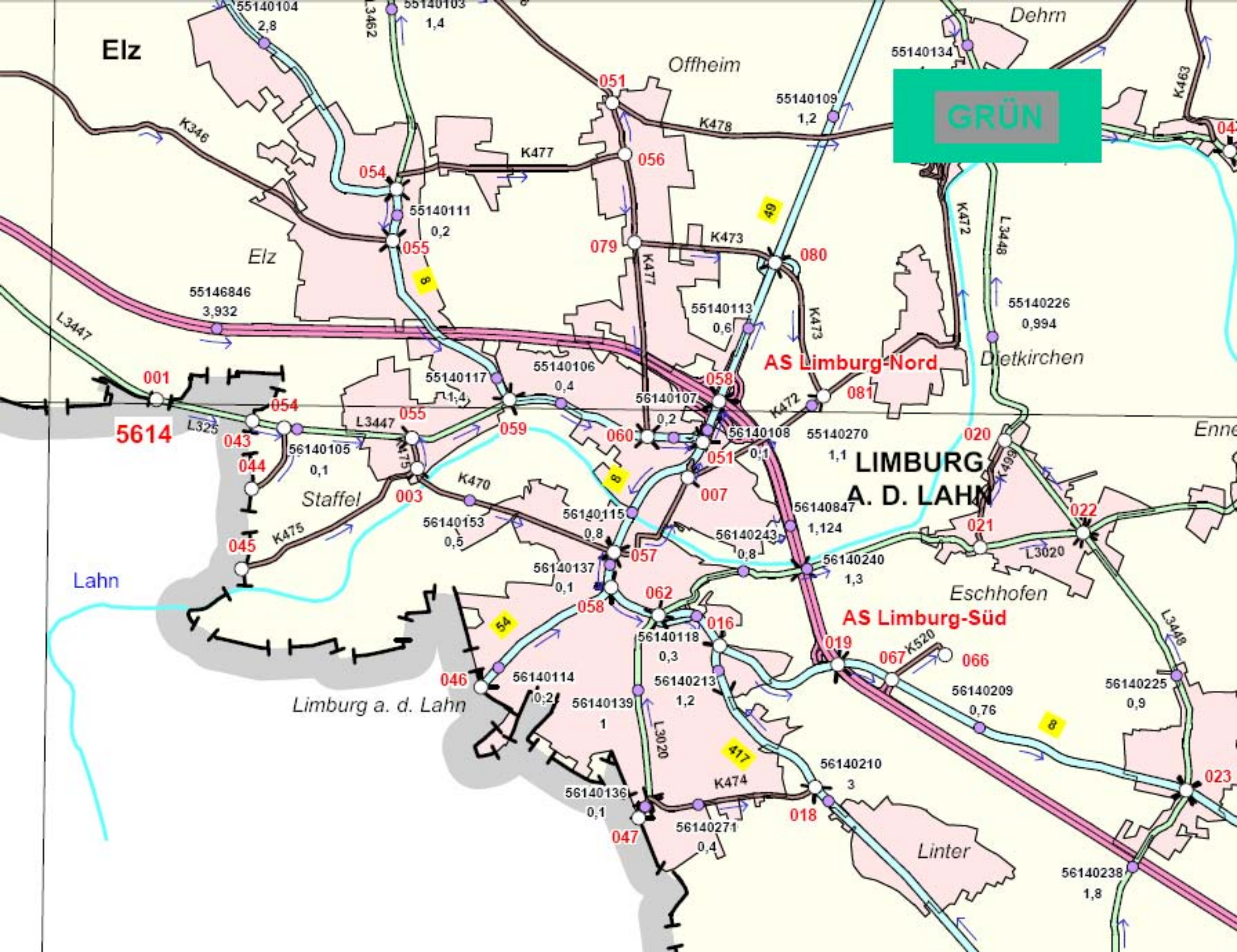
7

X

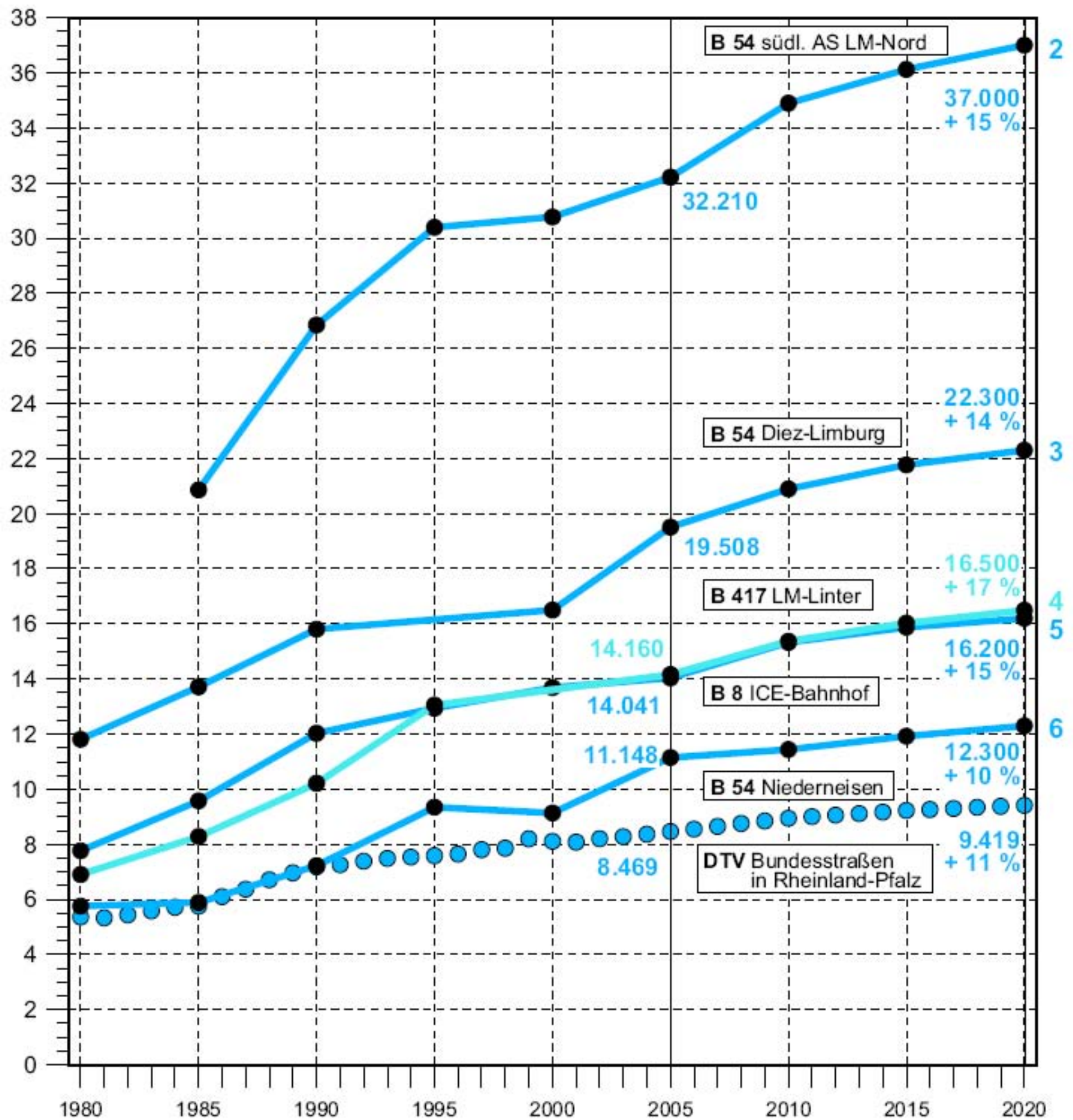


GELB

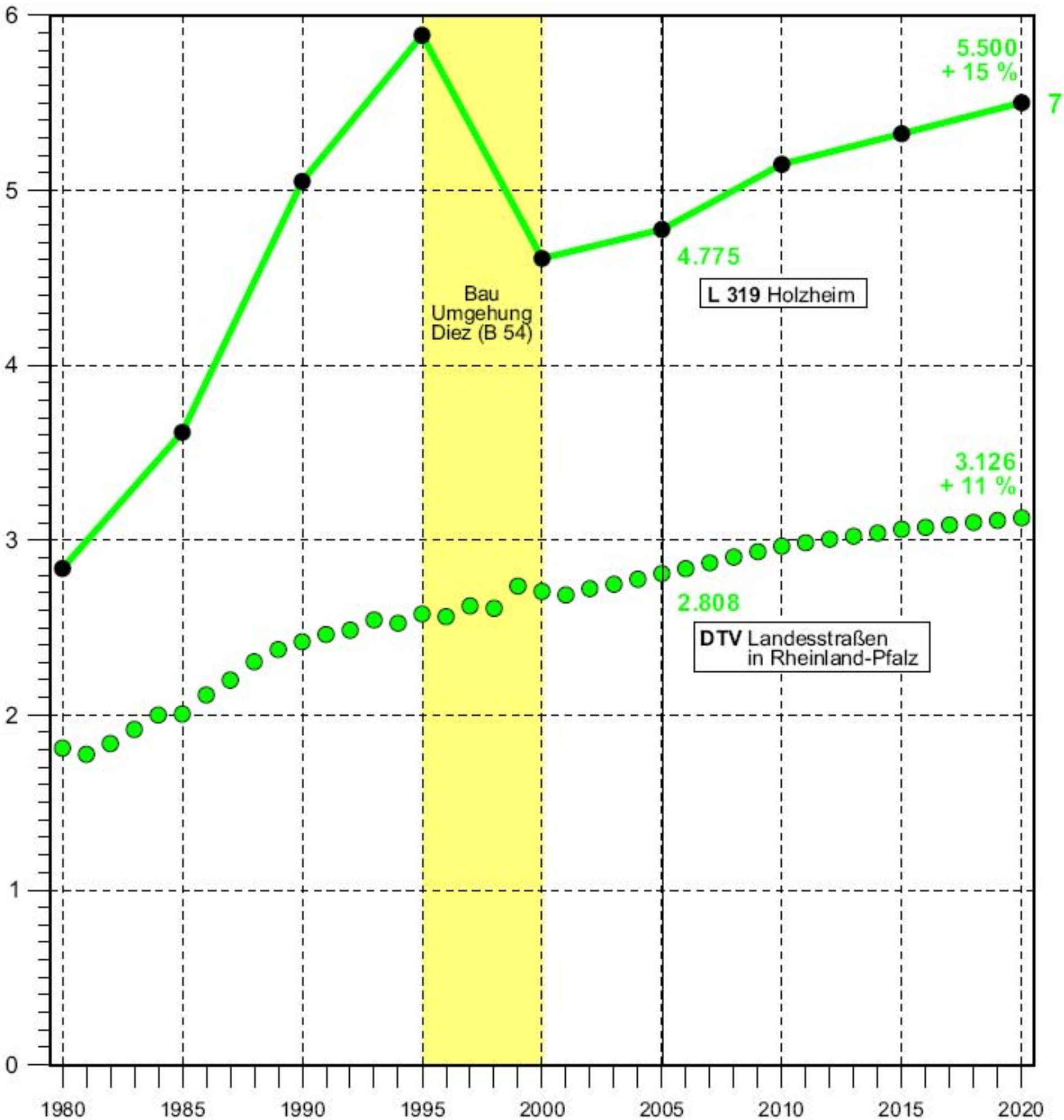




DTV in 1.000 Kfz/24 h



DTV in 1.000 Kfz/24 h



15. 14. 13. 12. 11.

BAB A 3
—
81.700
84.400

B 8
14.803
16.117
14.651

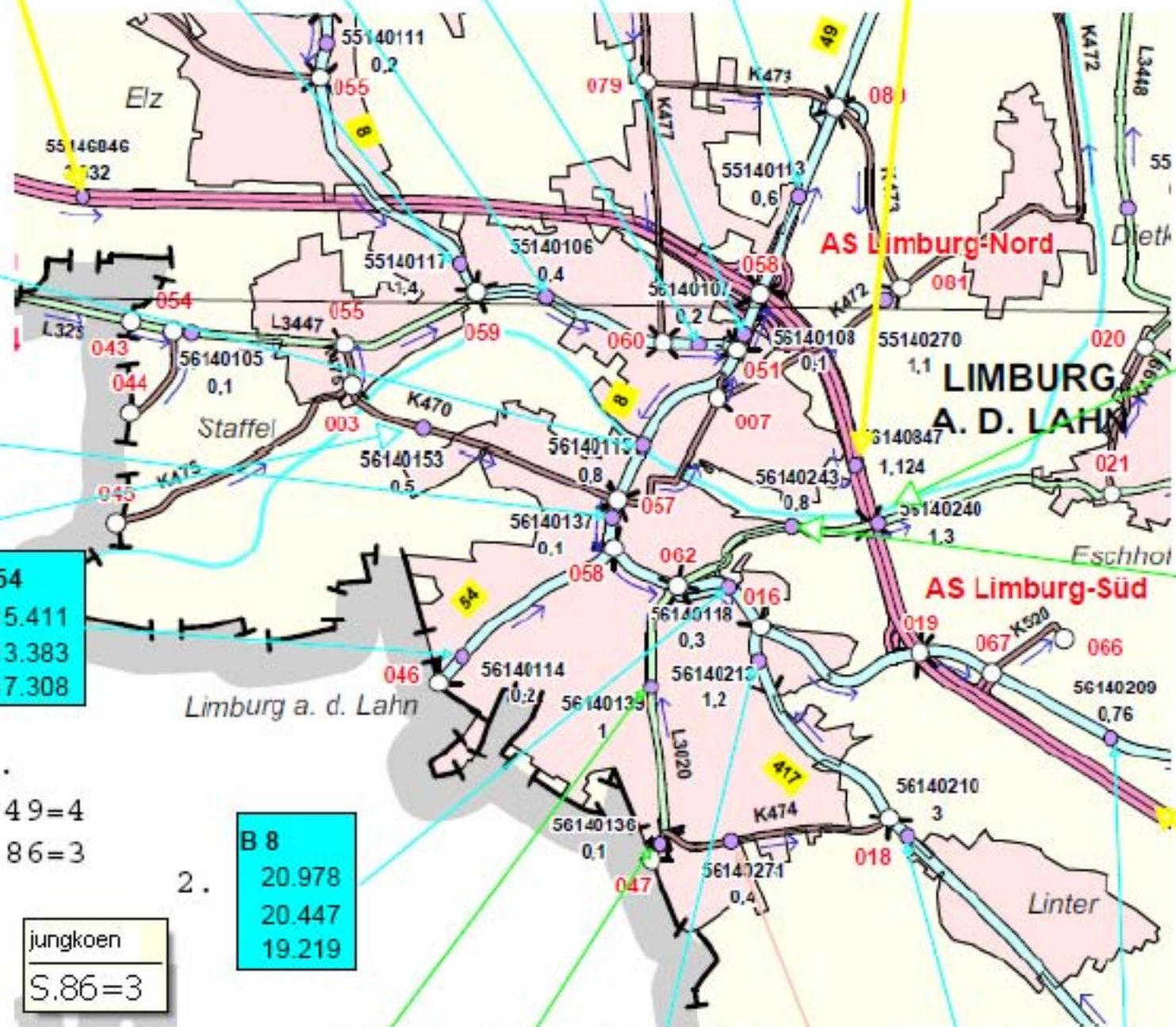
B 8
17.270
17.561
17.720

B 8
21.134
21.254
17.557

B 49
30.766
31.957
22.957

B 49
20.764
48.136
30.089

BAB A 3
—
92.200
94.300



16.

B 8
28.867
32.854
23.797

17.

B 8
29.000
29.524
24.986

B 8
8.967
9.801
6.678

B 54
15.411
13.383
17.308

10.

L 3020
5.474
6.441
6.024

L 3020
8.530
6.966
5.726

18.

1.

S. 49=4

S. 86=3

jungkoen

S.86=3

2.

B 8
20.978
20.447
19.219

9.

BAB A 3
—
85.800
88.200

Straße
2000
2005
2010

L 3020
8.981
8.364
9.534

L 3020
4.606
4.790
5.153

B 417
13.709
12.519
14.492

K 474
8.270
8.338
7.411

B 417
10.130
14.365
11.712

B 8
13.691
13.345
15.299

3. 4. 5. 6. 7. 8.